


# SAVARIA


## Telecab - Residential Elevator


Savaria introduces its newly innovated two-stop residential elevator, the **Telecab**. Its interior and exterior surfaces are now partly constructed with vacuum formed ABS plastics to both further enhance its design and your décor. By eliminating the need for a hoistway, the **Telecab** maximizes living space and keeps construction to a minimum.




**30  
MONTH  
LIMITED  
WARRANTY**

 **Head Office (North America)**  
4150 Highway #13  
Laval, Quebec, Canada  
H7R 6E9

 **(450) 681-5655**  
or 1 800 931-5655

 **(450) 681-4745**

 [www.savaria.com](http://www.savaria.com)

 [savaria@savaria.com](mailto:savaria@savaria.com)

The Telecab's modern design harmonizes with any environment. Type I shown with optional horizontal plastic panel on the hinged side.

Should a child stand on the top floor while the Telecab is going up, the top floor presence detector will automatically stop unit travel.

## Telecab - Residential Elevator

### Standard Equipment

- 500 lb (227 kg) capacity
- Maximum travel of 23' (7,000 mm)
- Travel speed 25 ft/min. (0.12 m/s) approx. up to 126" (3,200 mm) travel, 14 ft/min. (0.07 m/s) beyond
- Cab dimensions: 30" x 46" x 78" (762 x 1,168 x 1,981 mm)
- 115 VAC relay logic operation — 115 VAC up direction and 12 VDC down
- Automatic battery recharging system (115 VAC)
- Low voltage controls
- 2:1 chain hydraulic drive system
- Roller guides
- Keyed call / send stations
- Side mount Cab Operating Panel on door lock side
- Continuous pressure directional push buttons
- Non-skid platform surface
- Beige or white electrostatic powder coat paint finish
- Clear or bronze acrylic windows
- Front only cab access
- 36" x 59" (914 x 1,499 mm) min. floor cutout
- 90" (2,286 mm) minimum overhead at top landing
- Three piece modular cab design and 8 ft modular guide rail for easy access on site
- Time delay for automatic door lock system

### Safety Features

- Adjustable top floor presence detector built into the cab
- Electro-mechanical door lock and open door sensor
- Under-panel safety sensor
- Emergency stop and alarm
- Emergency battery lowering
- Manual emergency lowering
- Fully-enclosed drive tower for safety and aesthetics
- Pressure relief valve to prevent platform overload
- Slack chain safety device
- Two (2) halogen lights in cab
- Telephone in cab with multiple positions

### Optional Equipment

- Battery operation in up and down directions
- 32" x 54" (813 x 1,372 mm) cab dimensions
- Two door concept (front/back access)
- Custom cab size (without ABS vacuum formed plastic finish)
- Custom color
- Horizontal plastic panel on hinged side
- Wired remote control in cab
- Hydraulic door closer
- Automatic door operator (without ABS vacuum formed plastic finish)



New modern ABS vacuum formed plastic finish.



Modern curved ceiling with two halogen lights in cab for additional safety.

The plastic safety under-panel sensor will stop the Telecab travel in the down direction should it meet any obstacle.

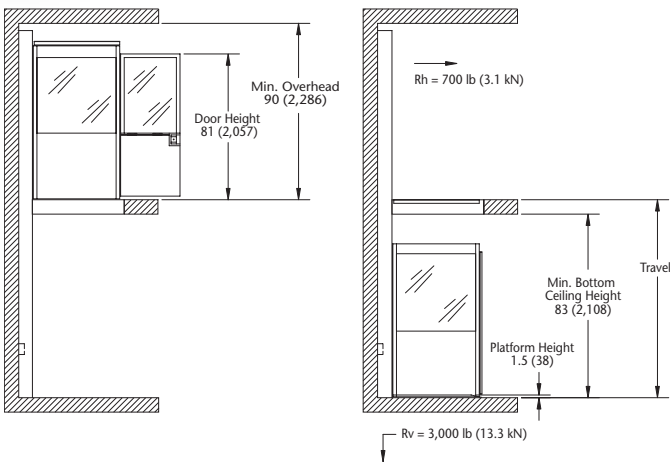


The Cab Operating Panel is easy to use and is mounted on the door lock side of the Telecab.



Door handles and emergency access key inside the cab.

## Elevation View



All 4 types available with ABS vacuum formed plastic finish.

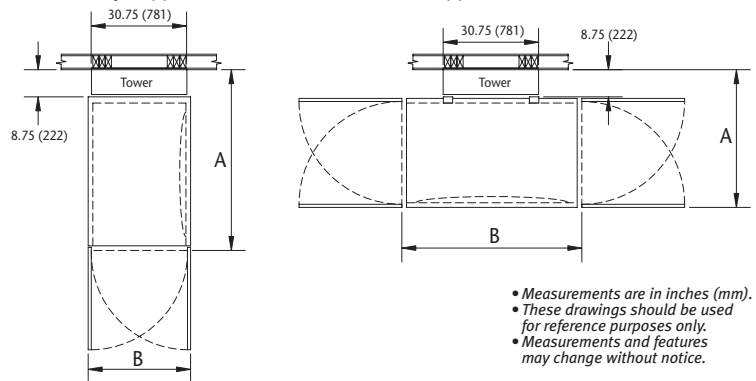
CAB TYPE	TYPE I		TYPE II		TYPE III		TYPE IV	
	Inches	mm	Inches	mm	Inches	mm	Inches	mm
INSIDE CAB DIMENSIONS	30 x 46	762 x 1,168	32 x 53	813 x 1,346	30 x 47	762 x 1,193	32 x 54	813 x 1,372
A Overall cab dim.	58.625	1,489	65.625	1,667	42.750	1,086	44.750	1,137
B Overall cab dim.	33.750	857	35.750	908	51.750	1,314	58.750	1,492
C Floor cutout	59	1,499	66	1,676	43.875	1,114	45.875	1,165
D Floor cutout	36	914	38	965	52.500	1,334	59.500	1,511

Authorized SAVARIA dealer

## Plan View

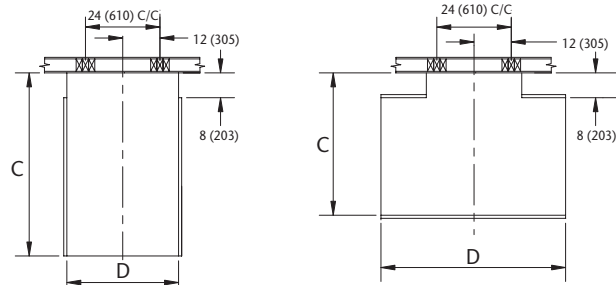
Front only (Type I & II)

Front /Back (Type III & IV) - optional



- Measurements are in inches (mm).
- These drawings should be used for reference purposes only.
- Measurements and features may change without notice.

Floor cutout



**SAVARIA**  
Your accessibility partner



SEE US IN



DIRECTORY CATALOG FILES CD SWEETS.COM